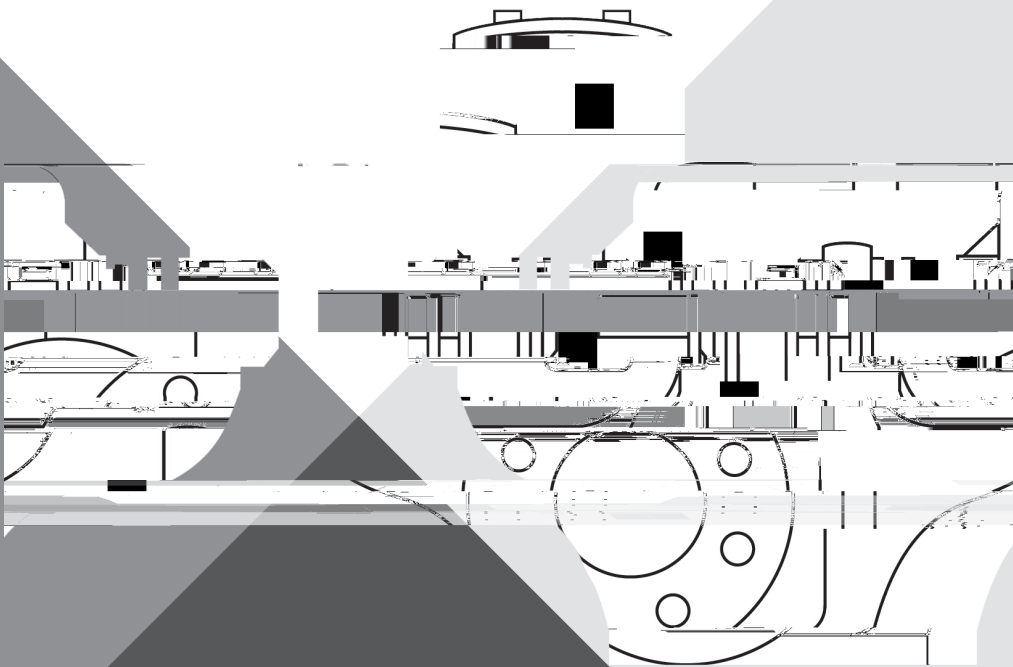




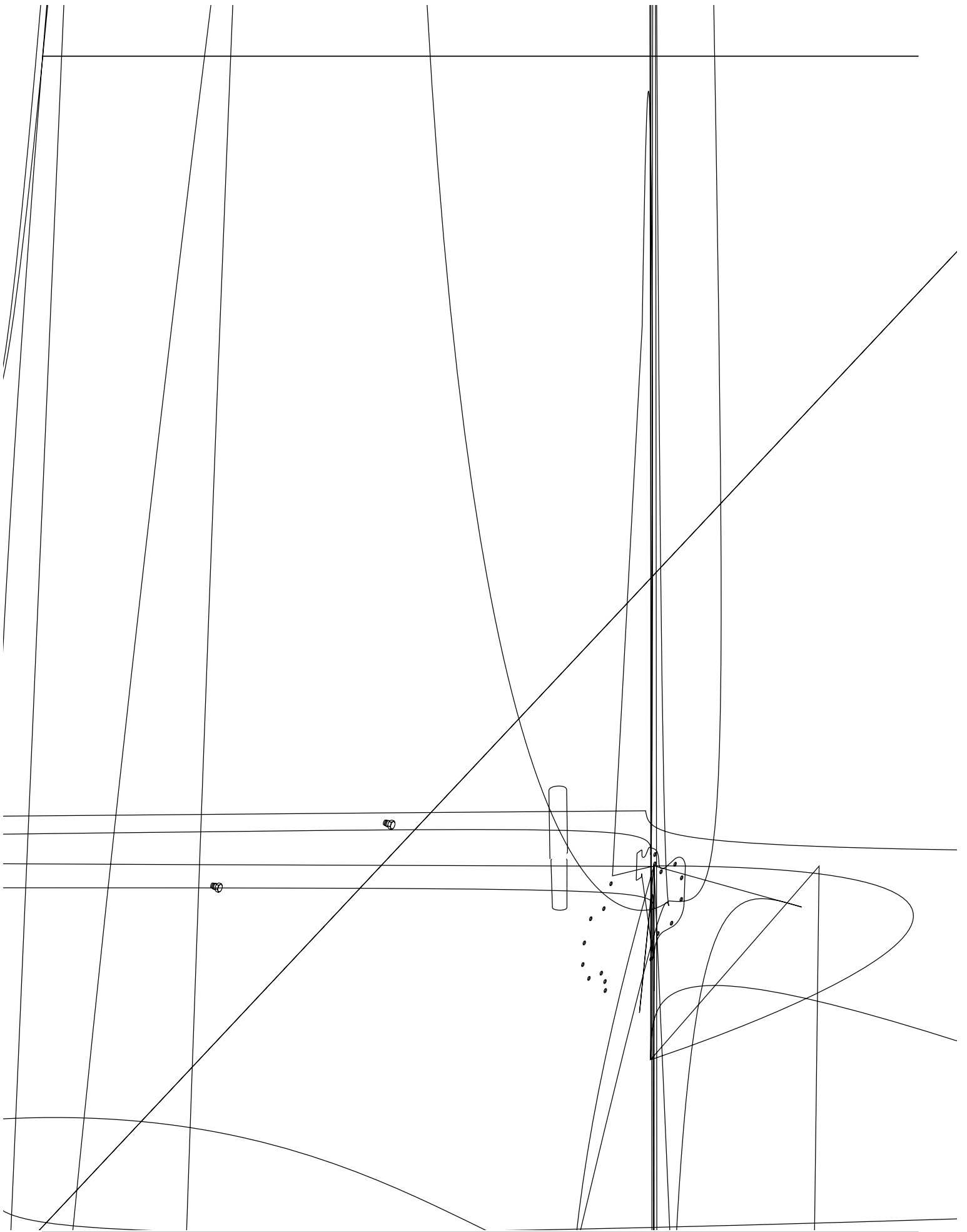
# TWO STAGE VERTICAL & HORIZONTAL SPLIT CASE PUMPS 420 SERIES

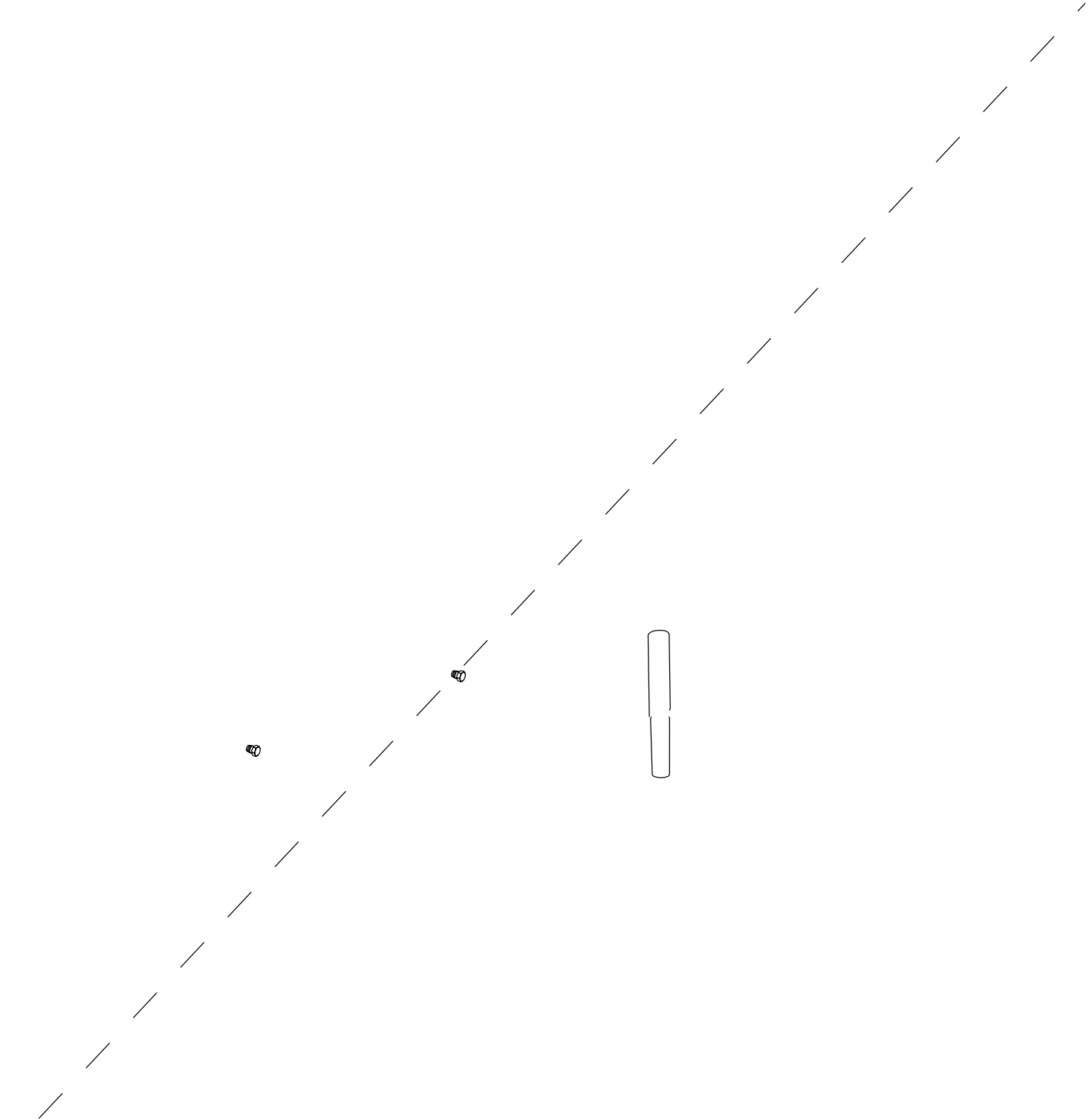


## REPAIR PARTS INDEX











68	KEY	1	472-0415	107	104	107	104
69	PIN	2	592-0361	360	-	360	-
		2	592-0051	-	235	-	235
70	IMP RING (OPT)						
	2x2-1/2x12A	2	676-1056	208	208	-	104
	2x2-1/2x12B	2	676-1014	208	208	-	104
	2-1/2x3x12A	2	676-1014	208	208	010	104
71	SHAFT	1	728-1040	063	104	063	104
72	PIN	4	592-0213	104	104	104	104
73	PIN	4	592-0213	104	104	104	104
	CASING ASSY MODEL 421						
74	2x2-1/2x12A	1	179-1910	010	RTF	010	RTF
	2x2-1/2x12B	1	179-1910	010	RTF	010	RTF
	2-1/2x3x12A	1	179-1918	010	RTF	010	RTF
	CASING ASSY MODEL 422 & 423						
	2x2-1/2x12A	1	179-1914	010	RTF	010	RTF
75	2x2-1/2x12B	1	179-1914	010	RTF	010	RTF
	2-1/2x3x12A	1	179-1922	010	RTF	010	RTF
	DRIVE SCREW	2	708-0013	365	365	365	365
76	NAMEPLATE	1	532-0045	114	114	114	114
	NUT						
77	FR. 143HP-256HP	4	544-0109	080	190	080	104
	FR. 284HP-445HP	4	544-0115	080	190	080	104
	CAPSCREW						
78	FR. 143HP-256HP		168-0388	082	082	082	082
	FR. 284HP-445HP		168-0566	082	082	082	082
79	CAPSCREW	5	168-0490	082	082	082	104
80	BRACKET		REFER TO FACTORY				
81	CAPSCREW	5	168-0490	082	082	082	104
82	BASE		REFER TO FACTORY				

Note 1) Material Code 644 - Sleeve 208, \*O\* Ring 457/ 646 - Sleeve 108, \*O\* Ring 457/ 623 - Sleeve 104, \*O\* Ring 457

---







---





